



Synetics : the best of the Normande

100% of the **TOP 15** of Normande breed

| | |
|----------------|---------|
| N°1: SAUVIGNON | 197 ISU |
| N°2: SAVIGNY | 192 ISU |
| N°3: RAPHAELO | 190 ISU |
| N°4: ROISOLEIL | 188 ISU |
| N°5: PICASSO | 188 ISU |
| N°6: PLACEBO | 187 ISU |

SYNETICS increases EVOLUTION selection breeding program performances for the Normande breed.

- By strengthening with expert selection tools accessible at a shared cost on a large scale
- By enhanced funding of the breeding program with access to more international opportunities

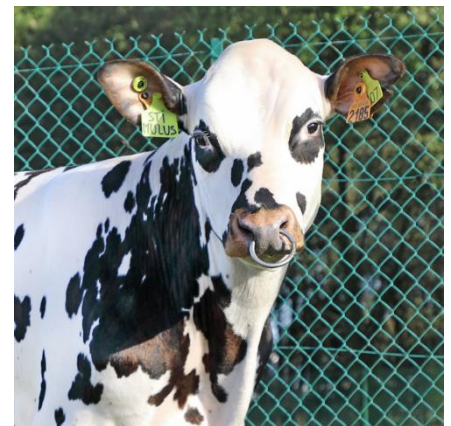
News: 1st Polled genetic available for the Normande Breed !

After 12 years of work and investment by EVOLUTION, SYNETICS can offer, now, the **1st polled** Normande bull: **STIMULUS P**. This novelty in Normande breed will allow societal challenges about *animal welfare* and improve the *quality of breeders' work*.

HOW?

After extensive research, the polled gene was not found in Normande population. In 2010, EVOLUTION decided to set up a program to develop the polled gene in the Normande breed.

The polled gene has been introduced through others dairy breeds already carrying polled gene as Red Holstein or Pie Rouge. Double carrier polled heifers were selected and collected with top Normande bulls in sexed semen. The polled daughters were inseminated by the same way for 5 generations until getting the full Normande official pedigree.-STIMULUS P is from the 5th generation with TOP Normande semen.



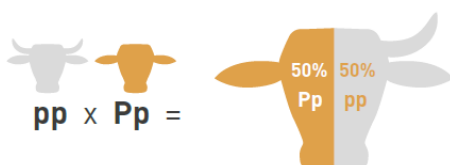
STIMULUS P

Nacre x Navidad x Game Over x Gameiro x Foirail

Beginning of the polled Normande story ...

EVOLUTION has been working few families in order to set up a wide range of polled pedigree with competitive genetic level. STIMULUS P is the 1st available on the market but not the last, few other bulls are already bought and will be available in a close future.

Today, **STIMULUS P** is available only in **sexed semen** and for countries **out of Europe**. Please if you are interested by the Normande polled novelty contact us !





Excellence of our genetics in new proofs

#1. Top bulls available in sexed

SECRET (170 ISU, A2A2 & BB), SSF only

“SECRET of qualities”

SECRET brings modernity in type

- Dual purpose Milk : + 1 020kg & Beef : +0.6 & SAMA +1.5
- Quality of milk : +0.3% Prot% & +0.22% Fat%
- Easy calving : 90 & -4 days in Gestation Length



SAUVIGNON (197 ISU, BB & A1A2), SSF only

“TOP ISU bull”

SAUVIGNON is the new N°1 available of the Normande breed

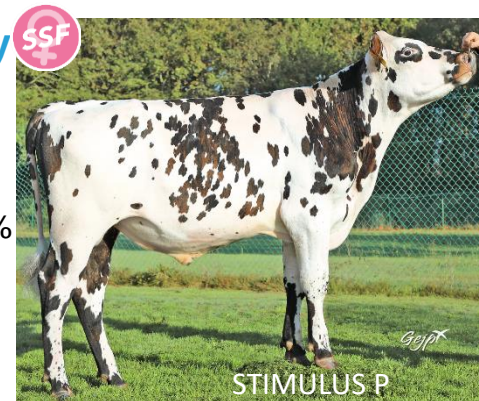
- Milk production : +1389 kg & +0.19% Fat & +0.12% Protein
- Type : +1.2 ; Beef : +2.3
- Calving ease : 87 => only on cows

STIMULUS P (151 ISU BB&A2A2 polled), SSF only

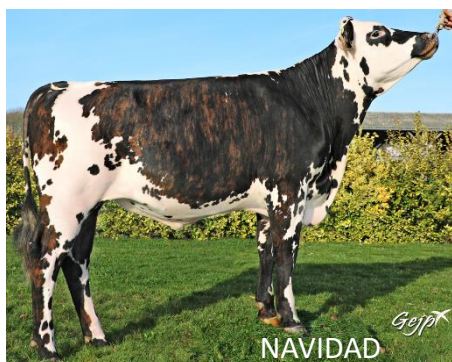
“First Normande polled bull”

STIMULUS P is the first Normande bull polled available

- Complete production profil: +838 kg milk with +0.11% Fat & +0.1% Prot%
- Grazing type : +1.3, Beautiful udders : +1, moderate frame +0.7
- Easy calving 91 & high fertility +1.2



#2. Top proven bulls



NAVIDAD (173 ISU, AB & A2A2)

“Dual purpose type”

Navidad gets 40 daughters with a beautiful type and confirms dual purpose profile

- Milk +841 kg & +0.09% Protein & Beef +2.3
- Beautiful daughters: +2.4 Type, +2.2 Feet&Legs
- Fertile daughters +1.6, Easy Calving 90



ORFEVRE (172 ISU, BB & A2A2)

“Daughters with dairy profile”

ORFEVRE has 37 daughters and confirms the dairy profile

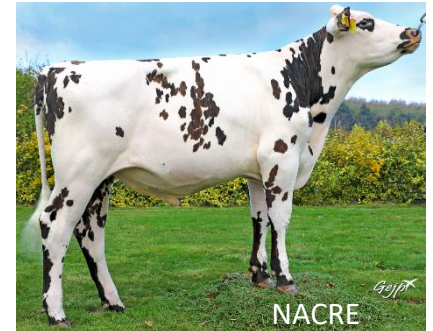
- High milk: +1229 kg with 0.14% Protein and +0.02% Fat
- Beautiful udder: +0.6, type +1.4, balanced frame +1.3
- Calving ease 89

NACRE (158 ISU, BB & A2A2)

“Type maker “

NACRE gets his 153 first daughters and confirms the type profile

- Milk production +415 kg with +0.19% Fat
- Amazing type +2.1 with beautiful udders +1.9 & impressive frame +1.2
- Easy calving: 91 & Gestation Length -6



#3. Top bulls available in conventional



SIRIUS (182 ISU, BB & A2A2)

“Authentic Normande bull”

SIRIUS brings all qualities sought for a Normande bull

- Dual purpose qualities: +880 kg & +0.45% Fat & +0.23% Protein & +0.5 Beef
- TOP Grazing type: +2.6 Type & +0.3 Stature & +1.7 Feet&Legs
- Amazing fertility: +1.9 and easy calving 92

SUBLIME (182 ISU, BB & A1A2)

“Amazing Fat level”

SUBLIME brings amazing contents, historical fat level

- Milk production : +673 kg & +0.97% Fat & +0.29% Protein
- Well balanced udder +1.2 and excellent Feet&Legs +1.8
- Easy calving 92 & Gestation Length -3



SALAMBO (169 ISU, BB & A2A2)

“Grazing type”

SALAMBO brings all qualities for grazing systems

- Milk quality : +1186kg 0.19% Protein & +0.19% Fat & Beef +0.4
- Grazing type with moderate stature +0.2 : +1.6 Feet&Legs, +1.2 Udders
- Easy calving 91